

NEWSLETTER

LYTHER NOWODHOW

Message from Mr Sturges

As we head into our final week before Christmas, the excitement is truly building throughout the school. The halls are filled with music, laughter and the sparkle of festive decorations, all creating the perfect backdrop for the much-anticipated final performance of our Christmas nativity, The Magical Christmas Jigsaw.

I would like to extend my heartfelt thanks to all the children for their incredible hard work in learning their lines, practising their songs, and approaching each rehearsal with such enthusiasm and confidence. Their energy and commitment have brought the story to life, and we could not be prouder of everything they have achieved.

A huge thank you also goes to our wonderful staff, whose dedication behind the scenes has made this production possible. From organising tickets and preparing costumes, to sourcing props and supporting the children as they learned the play in their classrooms, every effort has played an important part in creating something truly special for our school community. A very special mention must go to Mrs Rayner, who has worked tirelessly to bring all the pieces together. Her creativity, patience and passion have shaped this year's production into an experience that the children will remember for years to come.

We would also like to extend a big thank you to FROGS, who continue to support the school in so many ways. Their hard work in arranging the raffle, serving refreshments in the hall, and helping us with the setup has been very much appreciated. Their efforts help create the warm, welcoming atmosphere that makes our events so enjoyable. We also hope you enjoyed our new speaker system—proudly provided courtesy of FROGS—which has already made a noticeable difference to the sound quality during rehearsals.

As we move into the final week of term, we still have plenty to look forward to. From festive classroom activities to shared celebrations and acts of kindness across the school, it is a wonderful time for the children to come together and enjoy the spirit of the season.

If you have any questions or concerns, please do come and speak to me—I will be out on the gate every morning as usual, come rain or shine. It is always lovely to catch up with families during this busy, joyful time of year.

Thank you once again for your continued support. Wishing you all a joyful, peaceful and festive final week of term, and I hope the lead-up to Christmas brings plenty of warmth, excitement and happy memories for you and your families.

Warm regards,



GARRAS CP SCHOOL
SKOL GYNSA KEMENETH
GARROS



SAFEGUARDING

<https://www.qwell.io>

It is a free, anonymous online service to support adults with their wellbeing and mental health.

Tel: 01326 221653

garrassecretary@croftymat.org

BARN OWLS

KOWANNOW GWYNN

This week in Barn Owls...

What a week!

The children have been practicing their Nativity very hard this week! Our outfits and singing voices are ready to show off, and we are very excited to show you our performance on Friday.

We had a very special visitor on Thursday...SANTA!!! We were shocked and amazed when he flew over our school in his magic helicopter! He waved at us all and somehow managed to drop off a Christmas sack of chocolate for each and every one of us! He must have known it was Christmas jumper day. It was magical.

In phonics we have been consolidating our learning so far, we are very proud of how well the children have progressed since September. We have been busy writing lots of letters to Santa this week, making sure we use our best handwriting skills, capital letters and finger spaces for Santa and his elves.

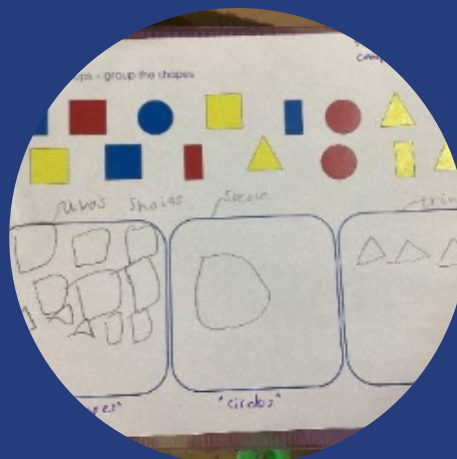
We got our Christmas craft on this week. We practiced using lots of different tools and skills such as weaving and cutting - taking special care of what shapes and colours we can choose to make beautiful Christmas decorations.

Year 1 have finished their place value unit in Maths. We hope you found their Maths Whizz log ins in their book bags! They are super excited to access Maths Whizz, and we hope you can use it at home as a great tool to support their learning. If you have any questions about this, please get in touch.

We have lots to look forward to next week such as our Christmas lunch and breaking up for the holidays!

We look forward to seeing you on Friday!

Warm wishes,



HAWK OWLS

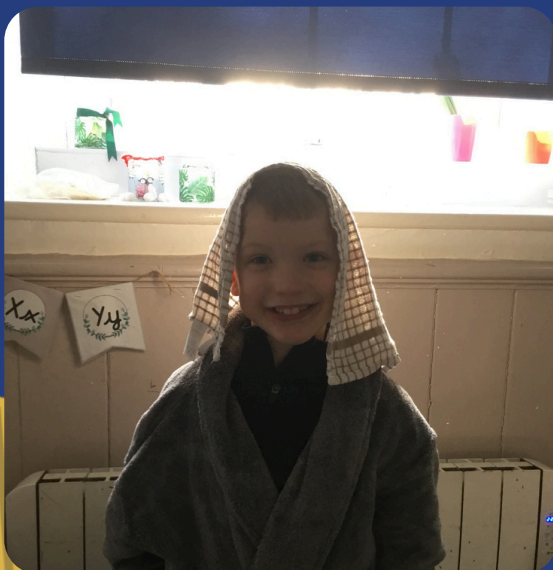
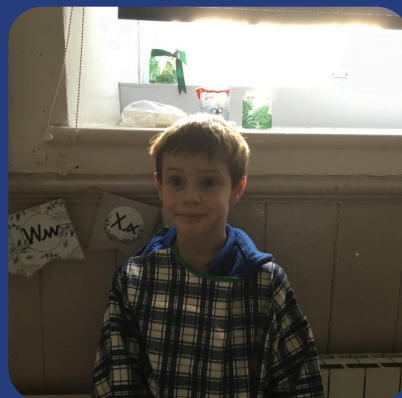
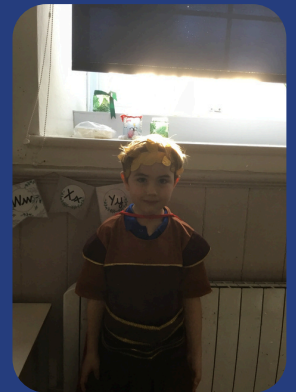
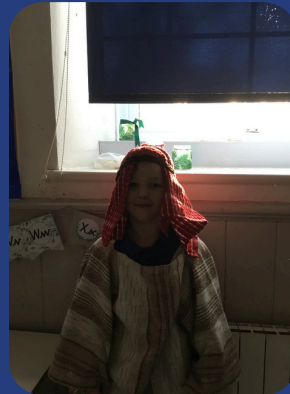
Kowannow Sparr Hok

This week in literacy, our young authors have been busy continuing to craft their own fantasy stories inspired by Roald Dahl's *The BFG*. They have been exploring the use of direct speech and discovering various synonyms for "said," which has really brought their characters to life!

In Art, we've embraced the festive spirit by learning about tints and shades. The children have created some truly stunning pieces, and the pride in their artwork was evident as they shared their masterpieces with the class. It's wonderful to see their creativity flourish!

Additionally, the children have continued to work hard on the nativity performance, which is scheduled for this coming Friday. Their enthusiasm and dedication has been remarkable, and we are excited to see their efforts come to life on stage.

Thank you for your continued support. We look forward to sharing more exciting updates in our next newsletter!



EAGLE OWLS

Kowannow Er

Eagle Owls Weekly Update 🦉

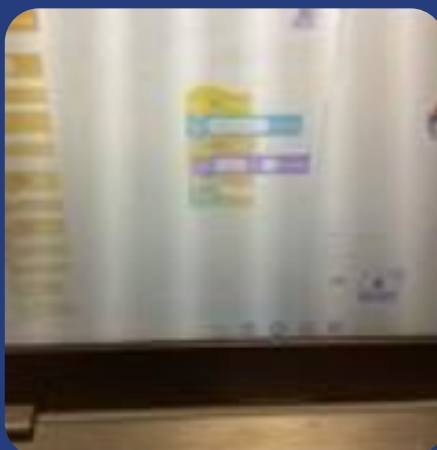
We are eagerly preparing for our upcoming Christmas play, and the children have been working enthusiastically on their rehearsals. We can't wait to share their hard work and festive spirit with you.

In Science, pupils took part in an exciting investigation into air resistance. They thoroughly enjoyed testing different designs and observing how shape and surface area can affect movement through the air.

Our Computing lessons saw the class creating their very own quizzes on Scratch. This project encouraged creativity, logical thinking, and problem-solving as pupils designed interactive questions and programmed their quiz features.

A special mention must go to Year 5 and Year 6, who have shown remarkable perseverance while tackling long division in Maths. Their determination and resilience have been wonderful to see—well done to all!

A brilliant week of hard work, creativity, and activity—well done, Eagle Owls! Only one week left until the holidays!



Garras Notice Board

Bord Argemynnow Garros



Please use the Absence Request form for your child absence. You can find the form on the school website

or [click here!](#)



School Communications to parents

Arbor

in-app messages and emails used for day to day communications.

Parent Pay

used for trips consents and payments.

Teachers2parents

available until the 7th July 2026 and used for reminders. After that date Crofty is moving to Arbor.

It is important that everyone please signs up to the Arbor app and Parent Pay website. Any questions, please contact Mrs V. Thank you for your patience and support during our communication system transition.



A kind reminder to not park on the zig-zag yellow line by the school area and on the yellow double lines by the roundabout during school drop off and pick up hours.



An amendment for the football league

New dates:

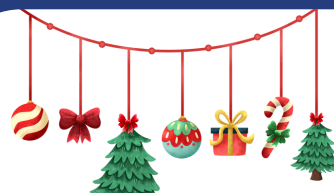
Monday 12th January 2026 (instead of 24/11/25)

Monday 19th January 2026 Girls only (instead of 17/11/25)

Monday 2nd February 2026 (instead of 1/12/25)



The school is selling honey kindly donated by Isaac's Dad. It's £5 a jar and the amount raised will be donated to Frogs. Thank you for your support!



Wednesday 17th December
Christmas Lunch
Christmas Parties
Non uniform day

The 'Virtues Project'

The 'Virtues Project' helps us all to develop good character qualities such as kindness, honesty and creativity in our children. Every two weeks we will focus on a virtue which is introduced at the start of the two weeks at Monday's assembly. This time we have been focusing on "Courage".

During this time, everyone will look to identify pupils in each class who are demonstrating this virtue.

The children who have been identified this time are:

Garras School

www.virtuesineducation.com

Thursday 11th December Garras School had a very special visitor
Santa flew twice over our playground with his helicopter to greet the children.



Celebrating Our Service Children

This week, we were delighted to take our service children on a special trip to celebrate being a military child. The visit was packed with fascinating learning and exciting experiences.

We began at the Met Office, where the children discovered how weather is predicted and monitored, including how storms are named and how weather can impact flying at Helston. We then visited the Air Traffic Control Tower and were lucky enough to see a helicopter take off while we were inside. The children learned how communication, teamwork and maths skills help to keep pilots safe.

At 824 NAS, the children explored a helicopter inside and out and found out about the roles of engineers and aircrew, including search and rescue operations. We also visited the Bird Control Unit, where they met Buddy the Harris Hawk and Loki the Peregrine Falcon. The children learned that Buddy chases pigeons from the hangars while Loki scares birds from the airfield to keep aircraft safe.

We rounded off our day with lunch at the Culdrose Community Centre, followed by some wonderful Christmas crafts, including snow globes, crackers, crowns, baubles and door hangers.

The children were a credit to the school and thoroughly enjoyed the experience. A big thank you to the staff at RNAS Culdrose and the Community Centre for organising such a fantastic day, and a special thank you to Freddie and Finn's dad for volunteering his time and escorting us around the base. The children were an absolute credit to the school and thoroughly enjoyed this incredible experience.



REMINDERS

KOFHEANSOVV

Cross Country Dates

Tuesday 16th September	Race 1	Reception/KS1 and KS2	Helston South Site- 4pm
Tuesday 7th October	Race 2	Reception/KS1 and KS2	Mullion- 4pm
Tuesday 4th November	Race 3	KS2	Helston North Site- 4pm
Tuesday 24th February	Race 4	KS2/Peninsula qualifier	Helston South Site 4pm
March	Peninsula Final	KS2	TBC 4-5pm
March	School Games Final	KS2	Newquay
Tuesday 28th April	Race 5	Reception/KS1 and KS2	Helston North
Tuesday 12th May	Race 6	Reception/KS1 and KS2	Helston South Site - 4pm
Tuesday 9th June	Fun Run	Reception/KS1 and KS2	Mullion 4pm

Y5/6 Football Tournament Dates

Date	Time	Year group	Venue
15.9.25	3:45-5pm	Y5/6	Helston Astro
6.10.25	3:45-5pm	Y5/6	Helston Astro
6.11.25 12.01.26	3:45-5pm	Y5/6	Helston Astro
11.11.25 GIRLS 19.01.26	3:45-5pm	Y5/6	Helston Astro
1.12.25 ONLY 02.02.26	3:45-5pm	Y5/6	Helston Astro

INSET DAYS

Monday 5th January 2026

Mon 23rd February 2026

Friday 8th May 2026

Monday 22nd June 2026

Thursday 23rd July 2026

ATTENDANCE

ATTENDYANS

Barn Owls 87.72%

Hawk Owls 93.89%

Eagle Owls 91.20%

Whole school 95.52%

DIARY DATES

DEDHYASOW DHYDHLVER

Tue 16 th December	PE lessons
Wed 17 th December	School Christmas lunch Recreation Hall Christmas Parties NO SATS Club
Friday 19 th December	Christingle 2pm Last day of Term NO After School Club
Mon 22 nd December to Friday 2 nd January	Christmas Holiday
Mon 5 th January	INSET DAY - School closed
Wed 7 th January	SATS Club 3.15pm to 4.15pm

Cornwall Council 2025/2026 School Term Dates for Community and Voluntary-Controlled Schools

September 2025						
Mon	1	8	15	22	29	
Tue	2	9	16	23	30	
Wed	3	10	17	24		
Thurs	4	11	18	25		
Fri	5	12	19	26		
Sat	6	13	20	27		
Sun	7	14	21	28		

October 2025						
Mon	6	13	20	27		
Tue	7	14	21	28		
Wed	1	8	15	22	29	
Thurs	2	9	16	23	30	
Fri	3	10	17	24	31	
Sat	4	11	18	25		
Sun	5	12	19	26		

November 2025						
Mon	3	10	17	24		
Tue	4	11	18	25		
Wed	5	12	19	26		
Thurs	6	13	20	27		
Fri	7	14	21	28		
Sat	8	15	22	29		
Sun	9	16	23	30		



School holidays

Bank holidays	
Christmas Day	25 December 2025
Boxing Day	26 December 2025
New Years Day	01 January 2026
Good Friday	03 April 2026
Easter Monday	06 April 2026
May Bank Holiday	04 May 2026
Spring Bank Holiday	25 May 2026
Summer Bank Holiday	31 August 2026

AUTUMN TERM (73 days)
3 September - 19 December 2025
(HALF TERM 27 - 31 October 2025)

SPRING TERM (59 days)
5 January - 2 April 2026
(HALF TERM 16 - 20 February 2026)

SUMMER TERM (63 days)
20 April - 23 July 2026
(HALF TERM 25 - 29 May 2026)

195 days are included on the school calendar. Schools will be open to pupils for 190 days. The five additional days are allotted for In-Service Training (INSET). Schools allocate their own INSET days.

Academy, trust and voluntary-aided schools set their own term dates and INSET days.

December 2025						
Mon	1	8	15	22	29	
Tue	2	9	16	23	30	
Wed	3	10	17	24	31	
Thurs	4	11	18	25		
Fri	5	12	19	26		
Sat	6	13	20	27		
Sun	7	14	21	28		

January 2026						
Mon	5	12	19	26		
Tue	6	13	20	27		
Wed	7	14	21	28		
Thurs	1	8	15	22	29	
Fri	2	9	16	23	30	
Sat	3	10	17	24	31	
Sun	4	11	18	25		

February 2026						
Mon	2	9	16	23		
Tue	3	10	17	24		
Wed	4	11	18	25		
Thurs	5	12	19	26		
Fri	6	13	20	27		
Sat	7	14	21	28		
Sun	8	15	22	29		

March 2026						
Mon	2	9	16	23	30	
Tue	3	10	17	24	31	
Wed	4	11	18	25		
Thurs	5	12	19	26		
Fri	6	13	20	27		
Sat	7	14	21	28		
Sun	8	15	22	29		

April 2026						
Mon	6	13	20	27		
Tue	7	14	21	28		
Wed	1	8	15	22	29	
Thurs	2	9	16	23	30	
Fri	3	10	17	24	31	
Sat	4	11	18	25		
Sun	5	12	19	26		

May 2026						
Mon	4	11	18	25		
Tue	5	12	19	26		
Wed	6	13	20	27		
Thurs	7	14	21	28		
Fri	1	8	15	22	29	
Sat	2	9	16	23	30	
Sun	3	10	17	24	31	

June 2026						
Mon	1	8	15	22	29	
Tue	2	9	16	23	30	
Wed	3	10	17	24		
Thurs	4	11	18	25		
Fri	5	12	19	26		
Sat	6	13	20	27		
Sun	7	14	21	28		

July 2026						
Mon	6	13	20	27		
Tue	7	14	21	28		
Wed	1	8	15	22	29	
Thurs	2	9	16	23	30	
Fri	3	10	17	24	31	
Sat	4	11	18	25		
Sun	5	12	19	26		

August 2026						
Mon	3	10	17	24	31	
Tue	4	11	18	25		
Wed	5	12	19	26		
Thurs	6	13	20	27		
Fri	7	14	21	28		
Sat	8	15	22	29		
Sun	9	16	23	30		



Published date: 06/02/19

What parents need to know about AGE RATINGS



If you have children, it is understandable to have concerns about the films and TV shows they watch, as well as the games they play. In this guide, we take a look at the two official ways you can assess if a particular title is suitable for your child. Both the BBFC and PEGI have search facilities on their websites that can be used to look up individual titles so you can check their ratings.



R18
RESTRICTED



RATINGS FOR FILMS, TV & MUSIC VIDEOS

Since 1912, the BBFC (British Board of Film Classification) has informed UK residents of the age suitability of films, TV and music videos - providing parents with the information needed to assess whether or not it is appropriate for their child's age. This applies to cinema releases, DVDs and streaming video services such as Netflix.

WHAT ARE THE BBFC RATINGS?

BBFC ratings are broken down into seven age categories:



Universal, suitable for all ages



Parental Guidance required



Suitable for people aged 12 and over



Suitable for people aged 12 and over, but only if accompanied by an adult



Suitable for people aged 15 and over



Suitable for people aged 18 and over



Adult content only available in specially licensed cinemas and specialist retailers

WHAT ELSE CAN BBFC REVEAL?

Accompanied with the age suitability rating, BBFC also provide an additional warning regarding the content and what to expect, such as swearing, sexual content, violence and anything you may consider to be inappropriate for your child. In addition to this, the content is also rated in three levels: frequent, mild or strong.

LIMITATIONS OF BBFC RATINGS

It's important to note that there is no obligation on streaming video services to use or display BBFC ratings. Due to this, we advise that you check the rating online before your child streams the content. It may also be a good idea to watch the content first yourself or discuss it with other parents to help you decide whether or not it is suitable for your child.

Source: www.bbfc.co.uk

RATINGS FOR GAMES

PEGI (Pan European Game Information) is a content rating system that ensures all video games are labelled with a minimum age recommendation. These age recommendations are based on the types of content featured within a game. With each game, PEGI also provide a content descriptor that indicates the potential issues and concerns, including sex, violence, bad language and drugs.

WHAT ARE THE PEGI RATINGS?

PEGI ratings are split into age restriction and content descriptors. Additional 'content descriptors' help parents and children to understand the type of content featured within a particular game, including sex, fear, bad language, discrimination, gambling, drugs, violence, and in-game purchases. In combination, the two different ratings can provide a good level of information to help make informed decisions regarding the suitability for your child.

PEGI age ratings are broken down into five categories:



www.pegi.info



www.pegi.info



www.pegi.info



www.pegi.info



www.pegi.info

PEGI content descriptors are broken down into eight categories:



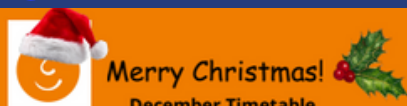
LIMITATIONS OF PEGI RATINGS

It's possible for young people to buy games online without a required proof of age, opening them up to age-inappropriate content without you knowing. We advise that you regularly monitor your child's gaming activities and maintain a honest and healthy dialogue with them about the online world.

PARENTAL CONTROLS

It is a good idea to put in place parental controls for all online accounts which your child may use to purchase or download online games e.g. The App Store, Google Play Store, PlayStation Store and Microsoft Xbox Store etc.

Source: www.pegi.info



Merry Christmas!

December Timetable

All sessions delivered live online via zoom, 10 minutes long
£24 each or FREE with School Membership
 Book online at facefamilyadvice.co.uk
 Recordings available for 48 hours (excluding Free Talk)

Decreasing Depression	1 DEC 10am
Raising Self Esteem	1 DEC 7pm
Understanding the Teenage Brain	2 DEC 10am
Supporting Healthy Sleep	2 DEC 7pm
Autism - Improving Communication	8 DEC 10am
Improving Family Communication	8 DEC 7pm
Supporting A Child with ADHD	9 DEC 10am
Understanding Addictive Behaviour	9 DEC 7pm
Anxiety Based School Avoidance	15 DEC 10am
Understanding Anger	15 DEC 7pm
Supporting Healthy Screen Use	16 DEC 10am
Facing Defiance	16 DEC 7pm



January 2026 Timetable

All sessions delivered live online via zoom, 10 minutes long
£24 each or FREE with School Membership
 Book online at facefamilyadvice.co.uk
 Recordings available for 48 hours (excluding Free Talk)

Autism - Improving Communication	5 Jan 10am
Improving Family Communication	5 Jan 7pm
Supporting A Child with ADHD	6 Jan 10am
Understanding Addictive Behaviour	6 Jan 7pm
Anxiety Based School Avoidance	12 Jan 10am
Understanding Anger	12 Jan 7pm
Supporting Healthy Screen Use	13 Jan 10am
Facing Defiance	13 Jan 7pm
Cannabis and Ketamine Awareness	19 Jan 10am
Anxiety Explained	19 Jan 7pm
Introduction to OCD	20 Jan 10am
What Is ACT	20 Jan 7pm
FREE Responding to Angry Behaviour	22 Jan 7-8pm
Raising Self-Esteem	26 Jan 10am
Decreasing Depression	26 Jan 7pm
Supporting Healthy Sleep	27 Jan 10am
Understanding the Teenage Brain	27 Jan 7pm



Are you struggling with a defiant child?



Facing Defiance

A six part online course for parents that you can complete in your own time.
 A step by step guide through a specific strategy aimed to support parents of children aged between 5 to 12 who are displaying very challenging behaviour, including children with ADHD, ODD and PDA.

go to facefamilyadvice.co.uk
 Book online £48
 on the **Online Parenting Courses** page

SPACE

Supporting Parents And Children Emotionally

SPACE is a free programme for any parent or carer who wants to better understand and support their children's emotions, as well as their own.

Each SPACE course is 5 sessions long and will cover:

- Understanding what is meant by a Trauma Informed approach
- Understanding basic stress and the fight/flight response
- Practical approaches to support children to regulate their emotions
- Healthy coping strategies for dealing with stress
- Managing different emotions
- Understanding behaviour
- Building resilience in ourselves and our children
- Adopting appropriate expectations of children
- Enhancing our ability to provide nurturing care

MOST has several upcoming 5 session SPACE courses as follows:

Every Monday from 12th January - 4th February 2026 - 13:00-14:30
 FACE TO FACE at Helston Family Hub, Bulwark Road, Helston, TR13 8JF

with ONLINE programmes as:

Every Friday from 1st January - 6th February 2026 - 09:30-10:30
 or
 Every Monday from 12th January - 30th February 2026 - 09:30-10:30

To request a place, complete the online form or scan the QR code provided BY 19th DECEMBER 2025:
<https://forms.office.com/e/1r50N6Gp1W>

These courses are for parents/carers of children 5-11 yrs only
 Spaces are limited (Max 8 per session); if you cannot attend, please notify us ASAP - 01726 873204

HAVE YOUR SAY!

DO YOU WANT 33 NEW HOUSES BUILT IN MAWGAN?

SHARE YOUR VIEWS AT THE NEXT
 MAWGAN PARISH COUNCIL MEETING

7:30PM
17 DECEMBER 2025
 Mawgan Recreational Hall
 Planning application PA25/07215
 (land adjacent to Langweath Lane)

HELSTON RAILWAY

Christmas Trains

Santa Train Dates (December 2025)
 6th, 7th, 13th, 14th, 20th, 21st, 22nd

Santa Train Times
 10:00, 11:30, 15:00

Train of Light Time
 17:30

Ticket Prices
 Adult £10
 Child £11.50
 Under 5 years £5

Child and under 5 prices include present from Santa!

visit www.helstonrailway.co.uk

Singing & Serving!

A special treat for us all for the final Gather of 2025....the Yr 6s from Garra Primary School will be along to sing some carols and then helping out in the cafe by being waiters and waitresses! So parents, carers, grandparents and friends please join us if you can. All welcome.

2pm, Thursday 18th December, Gather
Community Cafe, TR12 6AX